

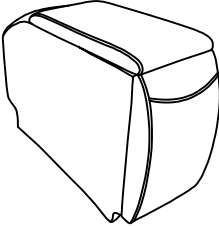

ASSEMBLY INSTRUCTIONS

Model: U6066


Description: Console With Storage, USB And Cup Holders

Thank you for purchasing this quality product. Be sure to check all packing material carefully for small parts that may have come loose inside the carton during shipment

PARTS LIST

NO.	DESCRIPTION	SKETCH	QTY
A	CONSOLE BODY		1 PC
B	CONSOLE BACK REST		1 PC

HARDWARE LIST

NO.	DESCRIPTION	SKETCH	QTY
C	STAR KNOB BOLT (Ø1/4" X50MM)		2 PCS

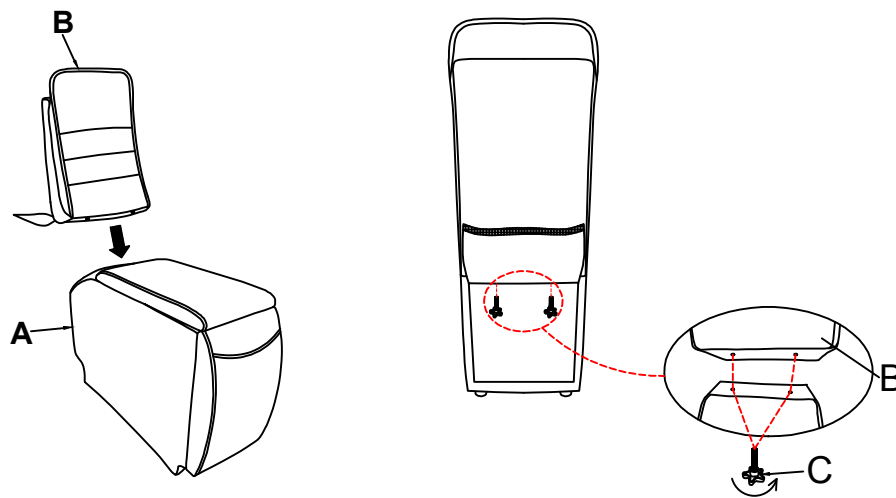
ASSEMBLY INSTRUCTIONS

Model: U6066

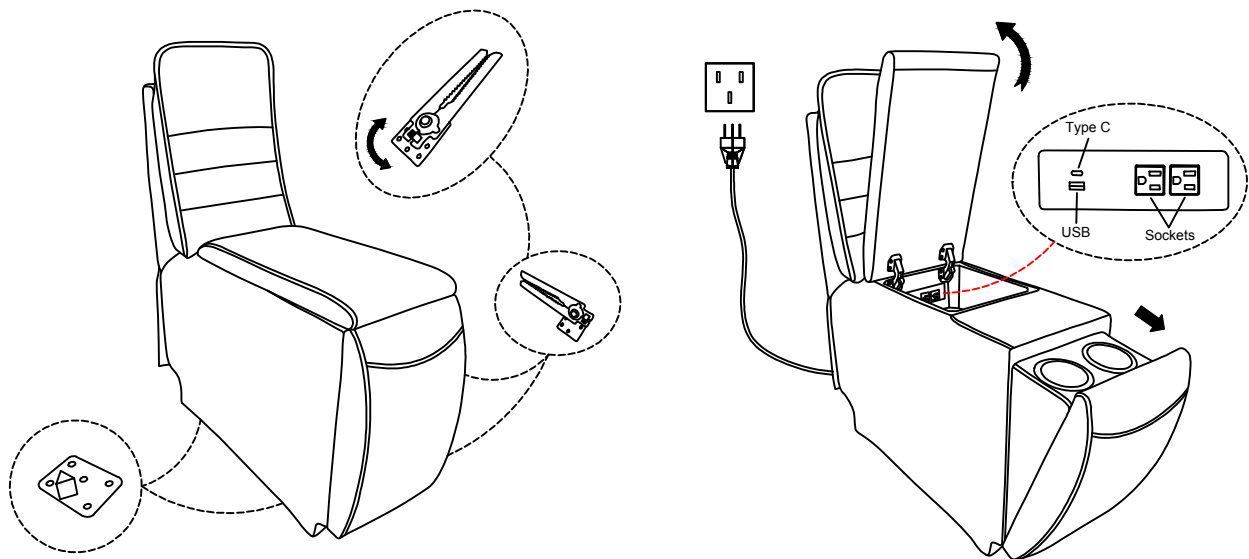
Description: Console With Storage, USB And Cup Holders

Thank you for purchasing this quality product. Be sure to check all packing material carefully for small parts that may have come loose inside the carton during shipment

Step 1: Attach console back rest (B) to console body (A) as shown below diagram.
Screw the star knob bolt to console back rest (B) as shown below diagram.



Step 2: Rotate the connecting hardware straight out as shown in the diagram w/90 degree as shown below diagram.
To use the cupholder open the top of console body as shown below diagram .



2 OF 2

Made in Vietnam